

# news **WPSHC** CENTRE

weekly newsletter of West Parry Sound Health Centre

November 30 to December 6 - 2015



Following in the footsteps of a great philanthropist... Steven Shurr is pictured with our Anthony S. Fell Emergency Department sign.

## Young philanthropist makes his mark locally

Early in October the Foundation received a call from Carrie Shurr, mum to Steven who for the past two years has been the local Miracle Child raising money for Sick Kids. Sick Kids has been critical to Steven's care since birth as Steven has spina bifida and hydrocephalus.

As he approached his 11th birthday, Steven announced he wanted to raise money for his local hospital. Steven is quick to point out he is a 'frequent flyer,' especially in Emergency where Steven says, "they are all so good to me."

Including Steven, three generations of the immediate family have been 'blessed by the care' from staff at our local hospital. For Steven's grandmother, aunt, and Steven himself, the care, mum Carrie said, has been exemplary. It wasn't a big leap for Steven to suggest forgoing birthday presents to make a donation to the Foundation of West Parry Sound Health Centre.

Steven arrived with \$355 dollars to donate just days after his birthday. As we walked through the health centre Steven and his mum regaled us with grateful stories of terrific care from our local care team – from paramedics, to nurses, to doctors – their kindness and care has been the difference in Steven's young life.

Keen to express his thankfulness in a meaningful way, Steven made his donation to help purchase critical equipment. In turn, the Foundation was able to honour Steven with a brick in his name on our Sounder's Wall in the Friendship Garden.

*Lynne Atkinson,  
Executive Director of the Foundation*



west parry sound  
health centre  
**FOUNDATION**

CARING FOR YOU  
IN COTTAGE COUNTRY

# WPSHC CARES

Compassion • Accountability • Rights & responsibilities • Excellence • Safety

# CHILDREN'S CHRISTMAS PARTY

Lakeland LTC & WPSHC

**Georgian Lanes - 13 December - 3 to 5 p.m.**

**Bowling • Crafts • Snacks & Refreshments**

(indoor socks, slippers, or shoes required for everyone)

**Please bring a donation for Harvest Share Food Bank**

Please RSVP to [qwic@wpshc.com](mailto:qwic@wpshc.com)



WPSHC &  
Lakeland LTC

## Celebrating *excellence*

WPSHC Long Service Awards Ceremony in conjunction with the

# Christmas Dinner & Dance

**Saturday 12 December**  
**Bobby Orr Community Centre**

5 p.m. Social & Cocktails

6 Awards Ceremony • 7 Dinner & Dance

*Catering by Crossroads*

*Tickets for this event are available in Human Resources*

\$35 for staff/volunteers

and one guest

\$45 for others

Dance only - \$10

**Sales deadline**  
**Friday 4 December**

Quality Worklife Initiatives Committee

# QWIC

*Improving  
your worklife experience*



## You can help us celebrate

We are seeking volunteers who are interested in helping at this year's event. This can include set-up, Smart Serve trained drink servers, and clean-up at evening's end.

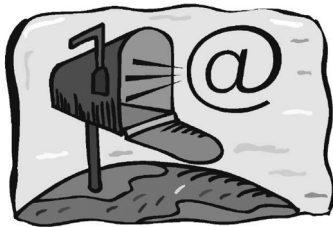
*Email your interest to*  
[qwic@wpshc.com](mailto:qwic@wpshc.com)

# WPSHC CARES

Compassion • Accountability • Rights & responsibilities • Excellence • Safety



West Parry Sound Health Centre is proud to be Accredited With Exemplary Standing, the highest measurement awarded by Accreditation Canada.  
[www.accreditation.ca](http://www.accreditation.ca)



**Please tell us**

Send us your compliments, questions, or concerns. Use the 'contact us' button at

[www.wpshec.com](http://www.wpshec.com)



This newsletter and other helpful information can be found on-line at [www.wpshec.com](http://www.wpshec.com)

Contact News Centre editor Jim Hanna  
 jhanna@wpshec.com  
 705 746-4540 extension 4144

**Nighttime hours**  
**11 p.m. to 7 a.m.**

Please use our **EMERGENCY** entrance between **11 p.m. and 7 a.m.**

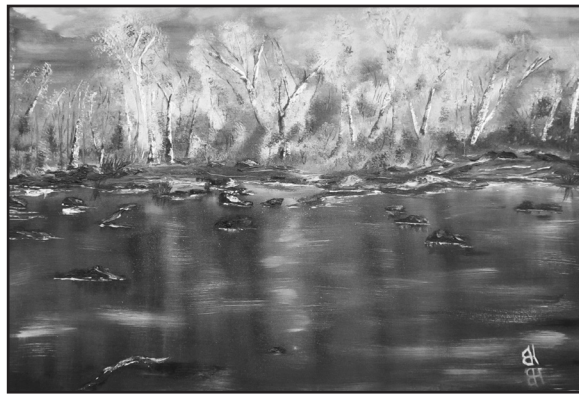
This entry is locked during nighttime hours



**Entry changes for nighttime hours**

This sign now informs patients and visitors that our main entry doors are locked and not used between the hours of 11 p.m. and 7 a.m. During those hours, all non-staff traffic will come and go through the Emergency Department entrance.

Our main front doorway will be open for staff and volunteers at 6 a.m.



**Lakeland Spirit Art Gallery**  
 offering a 20 percent discount during December.

Visit the exhibit by local artists

*One hundred pieces of artwork located on the first and second floor main hallways, and in the Celebration Room on the first floor.*

*See the Lakeland Spirit Art Gallery Directory located at the reception desk on the first floor or call Mary Jane Zissoff at 705-732-1603*





# Become a Citizens' Advisory Committee member



The Quality Management Partnership is helping to improve the quality of care in colonoscopy, mammography and pathology.

Your input is important to the success of this work.

Help shape programs to improve quality of care in the three health service areas.

### Who are we looking for?

- People who are passionate about making an impact on the health care system in Ontario
- People who have had a colonoscopy, mammogram or diagnostic test
- People whose family members have had a colonoscopy, mammogram or diagnostic test

If you are interested in applying, visit [www.qmpontario.ca](http://www.qmpontario.ca).

Applications will be accepted until November 27, 2015.

Display until November 27, 2015.



# WPSHC CARES

Compassion • Accountability • Rights & responsibilities • Excellence • Safety

*Proceeds to the WPSHC Auxiliary  
in support of health care for our community*



**Main Lobby • West Parry Sound Health Centre**  
**Friday 4 December**  
**9:30 a.m. to 2 p.m.**

## **SAFETY & COMFORT**

*During your hospital stay*

*The West Parry Sound Health Centre  
Auxiliary supports Patient Safety.  
Purchases help to fund improved  
health care for our community.*



**NO-SLIP socks are available in our Gift Shop**

# WPSHC CARES

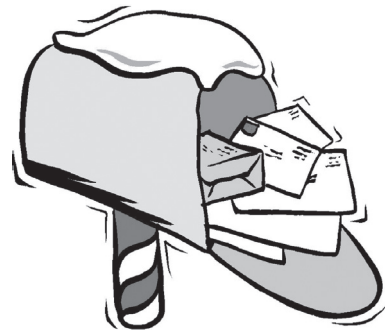
**Compassion • Accountability • Rights & responsibilities • Excellence • Safety**



## **Join us in celebrating a Caring Career**

Join Lab staff and your coworkers  
for cake and refreshments to celebrate  
Sandy Tyler's career in service to health  
care.

**WPSHC Cafeteria**  
**Monday 30 November**  
**at 2 p.m. - Please join us**



## **Send a 'Christmas card' to News Centre**

Send your department's Season's  
Greetings message to [jhanna@wpsbc.com](mailto:jhanna@wpsbc.com)  
for inclusion in the December 21 edition  
of News Centre. Please send PDFs or text  
content by the end of day on Monday,  
December 14.

## Accreditation Canada announces Leslee J. Thompson as new President and CEO

OTTAWA - The Board of Directors of Accreditation Canada has announced that Leslee J. Thompson has been selected as the new President and CEO of Accreditation Canada, effective February 1, 2016.

An experienced executive, corporate director and health system leader, Ms. Thompson joins Accreditation Canada after seven years as President & CEO of Kingston General Hospital, where she led the organization through a major transformation. Prior to KGH, Ms. Thompson led national and international teams in the private sector as Vice-President Medtronic Canada. Having held other senior executive roles in a provincial cancer agency, a regional health authority, community and academic hospitals, Ms. Thompson has worked with patients, providers, communities and policy makers in every part of our health care system.

“We are confident that Ms. Thompson’s experience, expertise and enthusiasm for quality improvement will serve our clients, surveyors and Accreditation Canada teams well at this point in our history,” said George Weber, Board Chair at Accreditation Canada. “We are looking forward to working with her to build on our strengths and to position our organization for long term success in Canada, and around the world.”

“I am thrilled to be joining Accreditation Canada as the new President & CEO,” said Ms. Thompson. “With its track record of success and bold ambitions for the future, I am excited to work with everyone to take the organization to the next level.”

Ms. Thompson holds a BSc in Nursing from Queen’s University, a Master of Science in Nursing from the University of Toronto, and a Master of Business Administration from the University of Western Ontario.

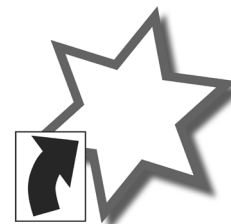
She is currently the Chair of the Canadian Foundation for Healthcare Improvement, an Assistant Professor at Queen’s University, and was named one of Canada’s Top 100 Most Powerful Women in 2013.

•••••

*Accreditation Canada is an independent, not-for-profit organization that accredits health care and social services organizations in Canada and around the world. Its comprehensive accreditation programs foster ongoing quality improvement through evidence-based standards and a rigorous external peer review. Accredited by the International Society for Quality in Health Care (ISQua), Accreditation Canada has been helping organizations improve health care quality and patient safety for more than 55 years.*

West Parry Sound Health Centre is proud to be Accredited With Exemplary Standing, the highest measurement awarded by Accreditation Canada.

[www.accreditation.ca](http://www.accreditation.ca)



WPSHC  
Shortcuts

## Mandatory training Accessibility for Ontarians with Disabilities Act

It is time to launch our Accessibility for Ontarians with Disabilities Act (AODA) training for all staff members. This mandatory AODA training must be completed by December 31, 2015.

Go to the Education Folder in the desktop shortcuts and click on the 'Accessibility for Ontarians with Disabilities Act' folder. In that folder you will find: the AODA presentation, quiz, the Corporate Accessibility at WPSHC Policy, and a list of our assistive devices.

The desktop shortcuts folder can be found on every computer within the Health Centre.

Return a hard copy of the completed quiz to our Human Resources Department.

# WPSHC CARES

Compassion • Accountability • Rights & responsibilities • Excellence • Safety



# WPSHC CARES

*Patients and Families experience our values in action*

*“From the Emerge, OR, ICU, and regular ward I was treated with super care from all that was involved.”*

**WPSHC CARES** is a weekly feature presenting comments received from patients and families served by WPSHC.

## You should be a Hand Hygiene Leader



*Use hand sanitizer every time you enter and leave the health centre.*



## WHITE ELEPHANT Christmas Sale

WPSHC Main Lobby

Friday 11 December  
10 a.m. to 3 p.m.

You can support the Auxiliary White Elephant Sale



*If you have precious Christmas decor items that you no longer need and that someone else would be interested in purchasing, please bring them to the Auxiliary office. Thank you to everyone for helping our Auxiliary support quality care at WPSHC.*



# WPSHC CARES

Compassion • Accountability • Rights & responsibilities • Excellence • Safety



# Know the Flu Facts



## 1 The Flu can be a serious disease.

- Flu is very contagious and can spread **quickly** and **easily**.
- You can pass the flu on to others who may be at **risk** of **serious complications**, before you even know you are sick.
- The **flu** is responsible for about 12,200 hospitalizations and 3,500 deaths per year\* and **can affect everyone**, including those who are healthy.



## 2 You need to get vaccinated every year.

- The **effects** of the **flu vaccine** can **wear off**, so you need to get a **new one every year** to stay protected.
- **Flu viruses change** each year. Experts create a **new vaccine** to protect you **each flu season**.

## 3 You can't get the Flu from the flu vaccine.

- The viruses in the **flu vaccine** are either killed or weakened and **cannot give you the flu**.

## 4 The Flu vaccine is safe.

- The **flu vaccine** has **benefited millions** of Canadians since 1946.
- Most people don't have reactions to the **flu vaccine**; those who do may have soreness, redness or swelling at the injection site.
- Severe **reactions** to the vaccine are **extremely rare**.



## 5 Everybody wins when you get vaccinated.

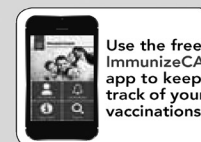
- By getting the **flu vaccine**, you **protect yourself and others** because you are less likely to spread the flu.
- It's a **simple action** that can **save lives**.



\* National Advisory Committee on Immunization. Statement on Seasonal Influenza Vaccine for 2015-2016.

© Her Majesty the Queen in Right of Canada, as represented by the Minister of Health, 2014  
ISSN: 978-1-100-54793-0 (Print) // 978-1-100-24879-0 (PDF) • Cat: H14-140/2014 (Print) // H14-140/2014E (PDF) • Pub: 150085

To find out where to get your flu vaccine or to learn more about the ImmunizeCA app, visit [Canada.ca/flu](http://Canada.ca/flu)



Use the free ImmunizeCA app to keep track of your vaccinations



Public Health  
Agency of Canada

Agence de la santé  
publique du Canada

# Canada

# WPSHC CARES

Compassion • Accountability • Rights & responsibilities • Excellence • Safety



*Where will you be celebrating Christmas?*



*Influenza immunization takes two weeks to become effective.*

***Take your Best Shot today.***



## **Declination forms due this week**

As of December 1, 2015 employees choosing NOT to be vaccinated must have signed and submitted to HR a declination form. This is mandatory. If you have not done so, please ensure that this is completed as soon as possible.

If you wish to have your flu vaccine, to follow are the clinic date and hours:

**Tuesday 1 December**  
0900 to 1000 hours

**Thursday 3 December**  
1300 to 1400 hours

The Clinic Care Coordinators are available at any time to give the flu vaccine if you are unable to attend one of these clinic dates. Speak to your coordinator regarding getting your flu vaccine done as soon as possible.

Get the flu shot and join a growing health community dedicated to protecting ourselves, our patients, and our families from influenza.



# **WPSHC CARES**

**Compassion • Accountability • Rights & responsibilities • Excellence • Safety**

**OUR DAILY LUNCH MENU** 



# What's cooking this week...

Open for lunch service from 11:30 a.m. to 1:30 p.m.

**MONDAY**

Soup - Tomato macaroni, Cream of chicken  
Entrees - Cabbage rolls, Grilled ham and cheese sandwich

**TUESDAY**

Soup - Cream of carrot, Hearty beef vegetable  
Entrees - Hot dog, Shepherd's pie

**WEDNESDAY**

Soup - Meatball and spinach, Low sodium turkey vegetable  
Entrees - Hamburger porcupine meatballs with potato and vegetables, Salad bar

**THURSDAY**

Soup - Pasta fagioli, Bean and bacon  
Entrees - Chicken finger wrap, Pasta primavera

**FRIDAY**

Soup - French onion, Cream of cauliflower  
Entrees - Fish & fries, Salad bar

**SATURDAY**

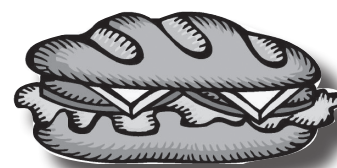
Soup - Minestrone  
Entree: Chicken burgers

**SUNDAY**

Soup - Vegetable  
Entree - BLT wraps



All weekly menus can be subject to change



A delicious selection of made-to-order sandwiches available at our Sandwich Bar during lunch hours Monday to Friday.

Meal Cards can be purchased in the Cafeteria, or from the Finance Department during regular office hours - Monday to Friday - 8 a.m. to 4 p.m.

**DINNER menu**

Open for dinner service from 5 to 7 p.m.

MONDAY	TUESDAY	WEDNESDAY	THURSDAY	FRIDAY	SATURDAY	SUNDAY
<i>Entree</i>	<i>Entree</i>	<i>Entree</i>	<i>Entree</i>	<i>Entree</i>	<i>Entree</i>	<i>Entree</i>
Honey Garlic Meatballs	Turkey dressing casserole	Macaroni and Cheese	Baked glazed ham	Chicken stir fry	Roast turkey	Honey garlic chicken
Mashed potatoes	Seasoned green beans	Mixed vegetables	Scalloped potatoes	rice	Roasted potatoes	Rice pilaf
Peas and Carrots			Vegetable medley		Carrots	Seasoned asparagus

# WPSHC CARES

Compassion • Accountability • Rights & responsibilities • Excellence • Safety

## Health care privacy in the news...

# Ex-hospital clerk fined for privacy breach

The Globe and Mail  
November 25th, 2015

JANET McFARLAND - Report on Business

A former hospital employee who sold confidential maternity-ward records to investment companies has been sentenced to two years of probation and ordered to pay \$45,000 in fines after pleading guilty to unregistered trading.

The former file clerk at the Rouge Valley Centenary Hospital in Toronto, pleaded guilty to breaching confidentiality rules by gaining access to maternity-patient information and selling it to registered education savings plan (RESP) dealers.

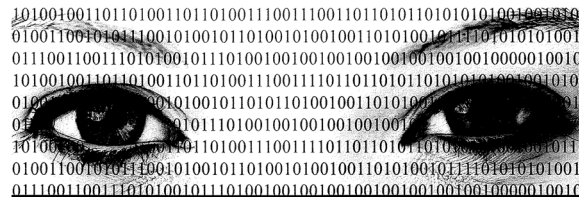
Justice Kathleen Caldwell of the Ontario Superior Court imposed a \$36,000 fine during a sentencing hearing on Monday plus an additional \$9,000 victim surcharge as required under provincial sentencing rules. The former clerk has also been ordered to do 300 hours of community-service work.

Justice Caldwell said the fine “reflects the seriousness of the breach-of-trust component and the vulnerability of the victims. All of the victims had recently given birth and were thus by definition at a very stressful and vulnerable, albeit joyous, time in their lives,” she said in her ruling.

Justice Caldwell also quoted from victim-impact statements, including a comment from one woman who said, “I don’t feel safe any more. How can a hospital not protect my data?” Another woman said she believed that she could not trust people working in a hospital. “What else in my file has been seen or sold?” she said.

This was the first person charged by the Ontario Securities Commission last year in a case that has exposed a massive privacy breach at the hospital, where information on as many as 8,300 patients was sold to investment firms.

Information from [www.theglobeandmail.com](http://www.theglobeandmail.com)



### Is Snooping on patients worth it?

Snooping on patients could cost you:

- Your reputation
- Your career
- College disciplinary action
- \$50,000 in fines
- A civil lawsuit

**RESPECT PATIENT PRIVACY**

[www.ipc.on.ca](http://www.ipc.on.ca)



**We all share our commitment to privacy**  
*A promise to patients, families, and each other.*

# WPSHC CARES

Compassion • Accountability • Rights & responsibilities • Excellence • Safety



# Join us at Palliative Rounds

**Thursday, December 3<sup>rd</sup>, 2015**

**0800-0900 hours**

**Celebration Room**

**Lakeland Long Term Care**

Guest Speaker:

**Larry Freeman**

Topic:

***Through the Valley:  
Spiritual Care in Palliative Care***



**WPSHC CARES**

**Compassion • Accountability • Rights & responsibilities • Excellence • Safety**



**GRAND  
ROUNDS**



**WPSHC  
CARES**



WEST PARRY SOUND  
HEALTH CENTRE

Friday 4 December  
Noon • Lakeland LTC  
Celebration Room

**Program Description**

West Parry Sound Health Centre Grand Rounds are one-hour sessions on the first Friday of each month. Grand Rounds provide didactic lectures (45 minutes) followed by 15 minutes of question and answer from the audience.

**Dr. Claudia Soto**

**TOPIC**

**“Benign Breast Disease...  
*an easy way to look at it”***

This program meets the accreditation criteria of The College of Family Physicians of Canada and has been accredited for up to **1 Mainpro-M1 credit(s)** as approved by the Continuing Education and Professional Development Office at the Northern Ontario School of Medicine.

This event is an Accredited Group Learning Activity (**Section 1**) as defined by the Maintenance of Certification program of The Royal College of Physicians and Surgeons of Canada, approved by the Continuing Education and Professional Development Office at the Northern Ontario School of Medicine for up to **1 hour(s)**.



[nosm.ca/cepd](http://nosm.ca/cepd)

**CEPD Office phone:** 1-807-766-7464 | **Website:** [nosm.ca/cepd](http://nosm.ca/cepd)

**WPSHC CARES**

**Compassion • Accountability • Rights & responsibilities • Excellence • Safety**

*A small world for the greatest gifts*



Including globes that spin and float...

*Home Decor • Books  
Seasonal Decorations  
Jewelery • Fashion  
Quilts & Handmade Items  
Candles & Lighting*

*Find fabulous gifts at  
Whispering Pines*

**Extended hours in December**

Thursdays until 7 p.m.

Fridays until 5 p.m.



**WPSHC** WEST PARRY SOUND HEALTH CENTRE  
**AUXILIARY**

*In service to health care since 1927*

*Proceeds to the WPSHC Auxiliary in support of health care for our community*

**WPSHC CARES**

**Compassion • Accountability • Rights & responsibilities • Excellence • Safety**